



RUTGERS UNIVERSITY
School of Graduate Studies

Biomedical Sciences PhD and MS Orientation

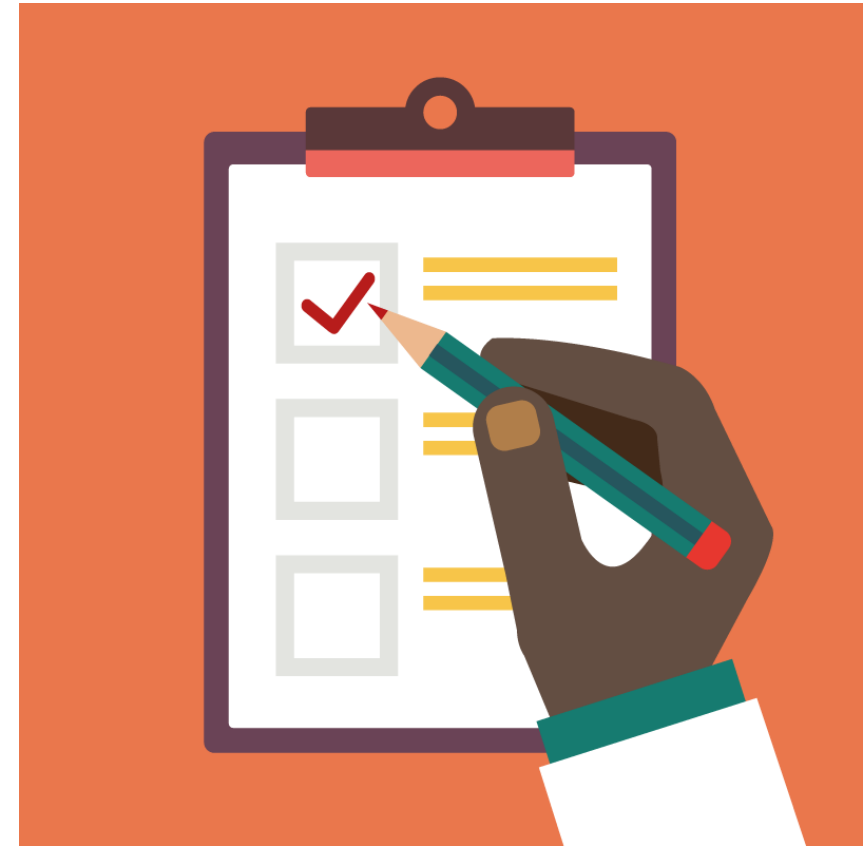
Janet Alder, PhD

Assistant Dean Graduate Academic and Student Affairs, SGS
Assistant Vice Chancellor for Postdoctoral Affairs, Rutgers Health
Associate Professor Neuroscience and Cell Biology, RWJMS

August 28, 2024

Agenda for today

- 9:00-10:20 – Overview of resources and opportunities for biomedical graduate students (Janet Alder)
- 10:20-10:30 - Graduate Student Life (Ghada Endick)
- 10:30-10:45 Graduate Student Organizations
- 10:45-11:00 Ice Breaker and Group Picture
- 11:00-12:30 Other resources
 - Wellness Services (Dana Simons)
 - Libraries (Victoria Wagner)
 - Scientific Integrity and Oath (Janet Alder)
 - Office of Disability Services (Brian Maher)
 - Office of Employment Equity (Joey DaSilva)
 - Violence Protection and Victims Assistance (Kerry Camerer)
 - Career Exploration and Success (Joe Scott)
 - Student Health (Nikita Cuvilje)
 - Recreation (Stacy Trukowski and Anne Finetto)
 - Transportation/Parking (Magen Davies)
- 12:30-1:15 Pizza lunch
- 1:15-2:30 Scavenger Hunt Tour of Busch Campus





Staff of the School of Graduate Studies – Biomedical and Health Sciences in New Brunswick/Piscataway

RWJMS Research Tower R-102

James Millonig, PhD, Senior Associate Dean



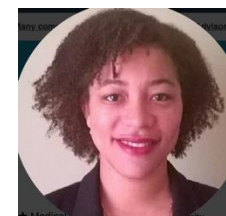
Janet Alder, PhD, Assistant Dean of Graduate Academic and Student Affairs



Smita Thakker-Varia, PhD, Assistant Dean of Graduate Academic and Student Affairs



Tracy Scott, PhD, Special Projects Coordinator
tracy.e.scott@rutgers.edu



Tina Marottoli – Registration, graduation
tina.marottoli@rutgers.edu



Johanna Sierra – Masters programs
sierrajo@rutgers.edu



Website for Biomedical Sciences

<https://grad.rutgers.edu/academics/graduate-programs/biomedical-and-health-sciences-all-degree-programs>



Biomedical and Health Sciences - All Degree Programs

New Brunswick | Piscataway, NJ

[→ Apply](#)

Biomedical and Health Sciences - All Degree Programs

- Prospective Graduate Students
- Initiative for Maximizing Student Development
- Master's Degree Programs
- Ph.D. Programs
- M.D./Ph.D. Program
- Certificate Programs
- Current Graduate Students
- Predoctoral Fellowships and Training Grant Resources
- Career Development + Academic Services
- Graduate Student Organizations

Home → Academics → Graduate Programs → **Biomedical and Health Sciences - All Degree Programs**

Welcome to the Biomedical and Health Sciences Graduate Programs

Preparing You For Success

The Rutgers University Biomedical and Health Sciences graduate programs in New



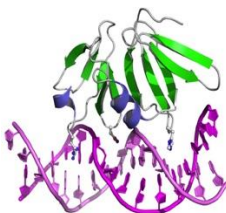


Biomedical Science Programs in New Brunswick/Piscataway

Molecular Biosciences Umbrella Program



Cell and Developmental Biology



Biochemistry and Molecular Biology



Cellular and Molecular Pharmacology



Physiology and Integrative Biology



Molecular Genetics and Microbiology

Individual Graduate Programs



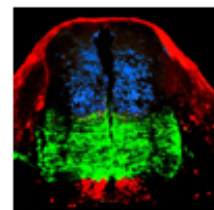
Biomedical Engineering



Exposure Science and Assessment



Toxicology



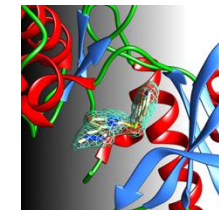
Neuroscience



Public Health



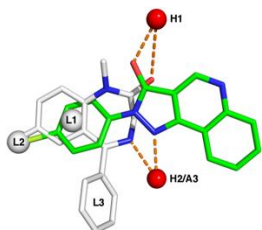
Nursing



Quantitative Biomedicine



Pharmaceutical Sciences



Medicinal Chemistry



Microbial Biology



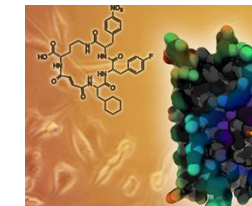
Endocrinology and Animal Biosciences



Nutritional Sciences



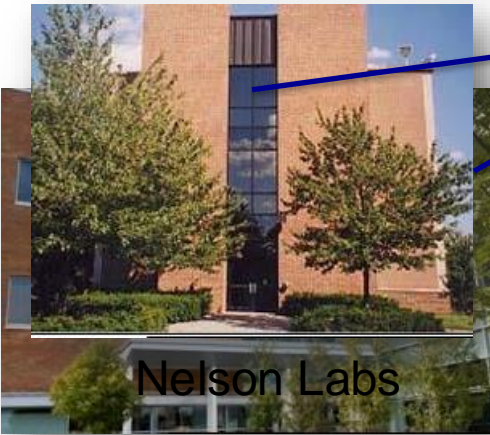
Chemical Biochemical Engineering



Chemistry and Chemical Biology



Chemistry and Chemical Biology

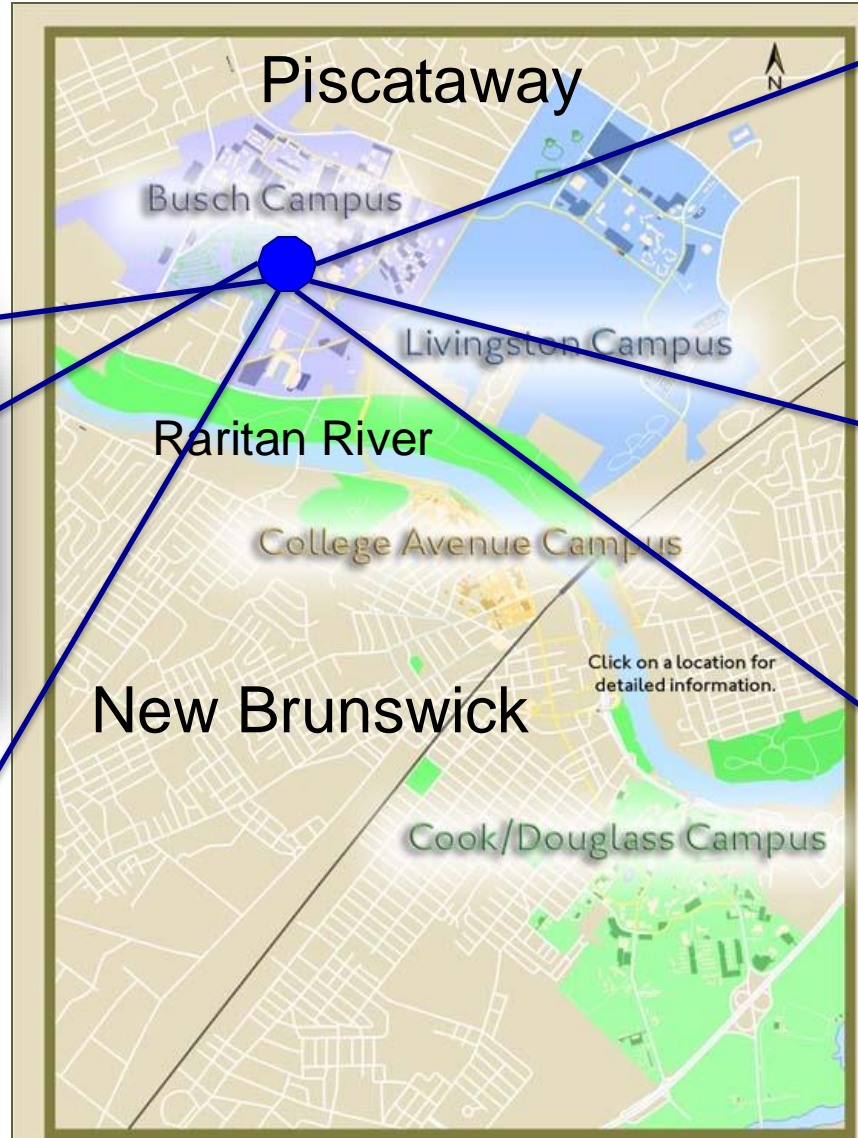


Nelson Labs

Life Sciences



Psychology



Pharmacy School



Waksman Institute



Biomedical Engineering



Environmental and Occupational Health Science Institute



Center for Advanced Biotechnology and Medicine



Robert Wood Johnson Medical School Research Tower and Research Building





Cancer Institute of New Jersey



The Child Health Institute for Basic and Clinical Research



Clinical Academic Building



School for Environmental and Biological Sciences

Rutgers Facts



- Member of Association of American Universities and Big10 Academic Alliance
- Ranked 61st of 2000 to world universities 2024 by the Center for World University Rankings
- Rutgers brings more federal research dollars to New Jersey than all other New Jersey colleges and universities combined
- Top 6% of American universities in science and engineering research and development expenditures
- \$929.3 million in research grants and sponsored programs received in 2023
- 470 clinical trials supported at any given time

University of Illinois
Indiana University
University of Iowa
University of Maryland
University of Michigan
Michigan State University
University of Minnesota
University of Nebraska-Lincoln
Northwestern University
Ohio State University
University of Oregon
Pennsylvania State University
Purdue University
Rutgers University-New Brunswick
University of California Los Angeles
University of Southern California
University of Washington
University of Wisconsin-Madison



Our faculty hold prestigious positions

Rutgers has more faculty in the National Academy of Sciences and the American Academy of Arts and Sciences than any other public peer school in the Northeast.

Paul Copeland



Ken Irvine



Eileen White



Bonnie Firestein



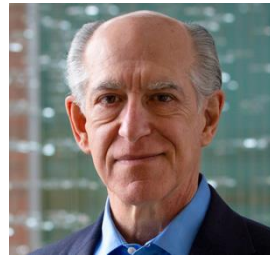
Richard Ebright



Tony Kong



Manny DiCicco-Bloom



Monica Driscoll



Masayori Inouye



Tara Matise



Chris Molloy



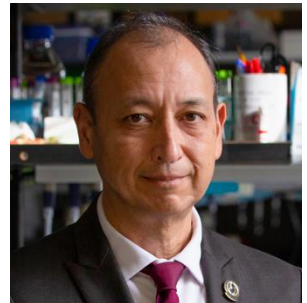
Renping Zhou



Monica Roth



Andy Singson



Suzie Chen



Martin Yarmush



Rutgers houses world-renowned resources

SAMPLED



- Largest DNA and cell repository in the world for the study of genetics and autism, mental health, drug abuse, alcoholism, diabetes, and digestive and kidney disease.
- Host to the Protein Data Bank, the single worldwide repository for 3D protein structures.
- A 550,000-square-foot, \$665 million project to bring scientists, doctors and patients together opening 2025

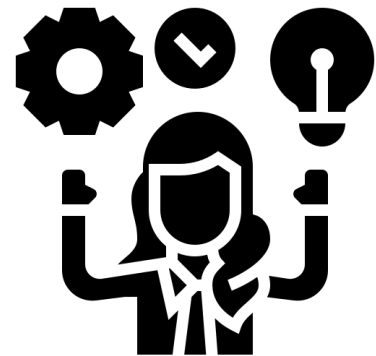


RUTGERS UNIVERSITY
School of Graduate Studies

Your Education and Academic Resources

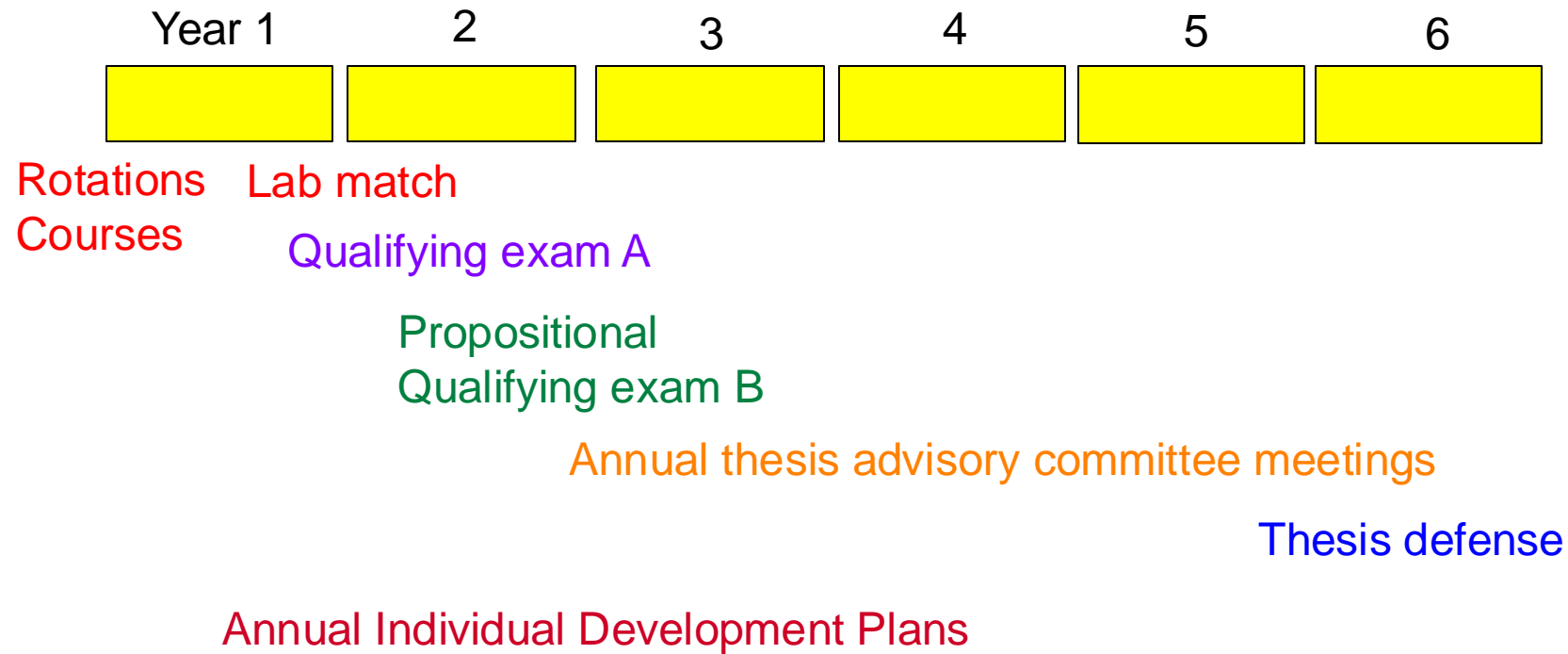
Competencies learned in graduate school – transferrable skills

- **Broad conceptual knowledge** - core courses
- **Deep knowledge of a specific field** - upper level courses, thesis work, and journal clubs
- **Critical thinking** - reading papers, planning experiments, reviewing grants and manuscripts. **Manuscript and grant writing workshops and groups**
- **Experimental skills** - rotations and thesis lab, collaborations
- **Responsible conduct of research** – **Ethical Scientific Conduct initial and refresher**
- **Rigor and reproducibility** - **Biostatistics classes**
- **Computational skills** – Computational courses and **Certificate in Computational Biology**
- **Collaboration/Teamwork** – working with other labs and within lab, **join student organizations**
- **Management and emotional intelligence skills** - manage your own project, **Individual Development Plans, mentor undergraduates, interact with faculty and peers (AAMC documents)**
- **Leadership and professionalism** – **volunteer for events and organizations, iJOBS**
- **Communication skills** - presentations in lab, university, and national meetings, writing manuscripts and fellowships, 3 Minute Thesis Competition, **Communicating science class**





Typical timeline



Statistics:

Time to defense: ~5.7 years

of publications: ~3 papers, ~1.4 first author



Managing your relationship with your PI - Documents to review together



Individual Development Plans (IDP)

- Educational research has shown that IDPs increase productivity
- NIH requires IDPs for all training grants and NIH Office of Management and Budget sent notice that grad students have dual roles and must engage in both training and career development.



- **First** and third year graduate students will do the AAAS online IDP (<http://myidp.sciencecareers.org/>) and upload to Canvas by Aug 31, 2025.
- Second and fourth year graduate students will complete Rutgers IDP and meet with an professional in potential career area.
 - Milestones and expectations for each year of grad school
 - SMART goals (Specific, Measurable, Achievable, Relevant, Time-Bound)

Training Grants to Support Grad Students

- NJ Alliance for Clinical and Translational Science (NJ ACTS)
<https://njacts.rbhs.rutgers.edu/education-training/workforce-development/tl1-predoctoral-postdoctoral-training-awards/>
- Biotech training program <https://biotechnology.rutgers.edu/>
- Environmental Toxicology <https://jgpt.rutgers.edu/>
- Training in Translating Neuroscience to Therapies <https://rwjms.rutgers.edu/institutes/institute-for-neurological-therapeutics/mission>
- Training in Addiction Research – <https://www.addiction.rutgers.edu/announcing-a-new-nida-funded-t32-pre-postdoctoral-research-training-program-in-neuroscience/>



Pre-doctoral external fellowship awardees this past year

NJ Commission on Brain Injury Research

Shradaha Suresh

Brandon Vaglio

Seanna Kelly

Srinivasa Gandhu

NJ Commission on Cancer Research

Chadni Patel

Komal Mandleywala

Kyle Nunn

NJ Governor's Council for Medical Research and Treatment of Autism

Hanna Caiola

American Heart Association

Fang Luo

NIH F31

Alexandra Logerfo

Emma Schweitzer

Francesca Lofaro

Tess Felicia Kowalski

Emmanuel Alvarez

Branden Sanabria

Sean Stratton

Kade Power

Carolyn Kinkade

Nusrath Yusuf

Chelsea Cary

Zakiyah Henry

Howard Hughes Medical Institute (HHMI) Gilliam Fellowship

Irving Estavez



Fellowship Applications Overview - Upcoming Workshop with Grad Fund



Fellowship Application Workshop for Biomedical PhD Students



**Thursday September 19, 2024
3:00 – 5:00pm**

Register

https://rutgers.ca1.qualtrics.com/jfe/form/SV_3Wpa1fN1HwgXgSa

Join Via Zoom

<https://rutgers.zoom.us/my/alderja> Passcode: Janet



This workshop will include presentations by:

- 1) GradFund on how to use their resources at Rutgers for identifying fellowship opportunities and applying for them.
- 2) A faculty member who serves on NIH study section and reviews fellowship applications with pointers on what reviewers are looking for.
- 3) A panel of graduate students and their mentors who have successfully obtained funding in the past few years from various organizations.

For more information contact Dr. Janet Alder janet.alder@rutgers.edu



- \$100 million in external fellowships and awards in the last 20 years
- Help identifying funding sources
- Virtual Office hours
- Help with application logistics
- Feedback, editing, and revising

<http://gradfund.rutgers.edu/>

Individual Fellowship Applications - Resources and support

Boiler plate paragraphs for various sections

<https://grad.rutgers.edu/academics/graduate-programs/biomedical-and-health-sciences-all-degree-programs/predocotrual-fellowships-training-grant-resources>

- RCR training
- Rigor and Reproducibility training
- iJOBS career development program
- Individual Development Plans
- Description of Institutional Environment and Commitment to Training and Additional Educational Information
- Sample successful NIH F applications, NSF, EPA, AHA, NJ state fellowships as well as diversity supplements upon request to Janet Alder



Fellowship Applications Workshops, Courses and Fall Writing Group



REGISTER HERE!



Click [here!](#)

Where Should I Start?

Building A Research Proposal

April 16th: Participants will learn about constructing their proposal for submission as a NIH F-series Fellowship Application

12:00-2:00pm

*All interested students and postdocs are welcome to attend this in-person session in Piscataway at EOHSI (Room C). Others can participate via Zoom.
Lunch will be served at 11:30am.*

Participants in this workshop will have top priority to join the 10-week fellowship writing group in Fall 2024.

Supported by NIH Grants UL1TR003017, T32ES001748, P30ES005022

NJ ACTS, Rutgers School of Graduate Studies, Rutgers Health Office for Postdoctoral Affairs, and the Center for Environmental Exposures and Disease* after the Office for Postdoc Affairs

NIH Fellowship Writing Group

Under the guidance of a Grant Writing Coach, construct your NIH fellowship application this Fall.

Who is this Writing Group for?



PhD and MD/PhD students and Postdocs preparing NIH NRSA fellowship applications for the December 2024 or April 2024 deadlines. We typically accept ~25 participants each year.

What is the weekly commitment?



This is an interactive group. You will need to submit application sections each week – and – peer review sections from other participants in addition to the 1-hr live meeting. Plan to commit ~6 to 8 hr effort each week.

Where and when do I sign up?



Sign up at the QR code. Limited spots!



Are participants successful in obtaining their NIH fellowship?



Yes! Successful examples are available to participants. Some recent awardees include:

F32GM140669 F31HL160196 F31ES034269
F31ES032319 F31NS122438

Mark Your
Calendars Now!



All meetings are
Mondays 1 pm EST
starting Sept 9th

Note: Applicants for NIH fellowships must be a US citizen or permanent resident to apply. Questions? Email Lauren Aleksunes at aleksunes@eohsi.Rutgers.edu

- GSBS 9300 Independent Study Course for NIH Fellowship Writing Group in Fall
- 16:681:601 Grant Writing Basics spring course
Guidance and practice in writing a biological research grant proposal focusing on Specific Aims.
- 16:830:504 Advanced Studies in Neuroscience or Psychology to write an NRSA F31 Grant Proposal.
The purpose of the course is to facilitate each student's submission of an F31 application for the December deadline

Some recent first author manuscripts by grad students

Sonal Gahlawat **Annals of Biomedical Engineering**, July 2024. "Tissue Engineered 3D Constructs for Volumetric Muscle Loss".

Jay N. Joshi **Cell Reports**, July 2024. "mTORC1 activity oscillates throughout the cell cycle, promoting mitotic entry and differentially influencing autophagy induction".

Kyle P. Flannery **Neurogenetics**, July 2024. "A novel missense variant in the ATPase domain of ATP8A2 and review of phenotypic variability of ATP8A2-related disorders caused by missense changes".

Mikayla M. Voglewede **iScience**, July 2024. "Loss of the polarity protein Par3 promotes dendritic spine neoteny and enhances learning and memory".

Samuel A. Adeleye **PLoS Genetics**, May 2024. "Queuosine biosynthetic enzyme, QueE moonlights as a cell division regulator."

Kiranmayi Vemuri **Cell Reports**, May 2024. "Dynamic RNA polymerase II occupancy drives differentiation of the intestine under the direction of HNF4."

Kaiden M. Power **The Journal of Cell Biology**, May 2024. "NEKL-4 regulates microtubule stability and mitochondrial health in ciliated neurons."

Alyssa Bellomo **Toxicology and Applied Pharmacology**, April 2024. "Identification of early events in nitrogen mustard pulmonary toxicity that are independent of infiltrating inflammatory cells using precision cut lung slices".

Jake N. Siebert **Pharmaceutics**, April 2024. "Early Detection of Myeloid-Derived Suppressor Cells in the Lung Pre-Metastatic Niche by Shortwave Infrared Nanoprobes".

Anna Fateeva **Cancers**, April 2024. "Current State of Melanoma Therapy and Next Steps: Battling Therapeutic Resistance."

Reem Alatrash **Viruses**, March 2024. "The Adaptive Immune Response against *Bunyavirales*."

Smrithi Prem **eLife**, March 2024. "Dysregulation of mTOR signaling mediates common neurite and migration defects in both idiopathic and 16p11.2 deletion autism neural precursor cells."

Chelsea M. Cary **Toxicological sciences: an official journal of the Society of Toxicology**, February 2024. "Single pulmonary nanopolystyrene exposure in late-stage pregnancy dysregulates maternal and fetal cardiovascular function".

Brittany F. Karas **Human Molecular Genetics**, January 2024. "Removal of pomt1 in zebrafish leads to loss of α -dystroglycan glycosylation and dystroglycanopathy phenotypes".

Gabriel Villegas **FEBS letters**, December 2023. "DAYWAKE implicates novel roles for circulating lipid-binding proteins as extracerebral regulators of daytime wake-sleep behavior".

Igor Ivanovski **Journal of Microbiology**, December 2023. "Genetic and Functional Characterization of a Salicylate 1-monoxygenase Located on an Integrative and Conjugative Element (ICE) in *Pseudomonas stutzeri* AJR13".

Jessica E. Fellmeth **PLoS Genetics**, November 2023. "A dynamic population of prophase CENP-C is required for meiotic chromosome segregation".

Bassel Ghaddar, **Bioinformatics**, November 2023. "Hierarchical and automated cell-type annotation and inference of cancer cell of origin with Census."

John S. Favate **eLife**, November 2023. "Linking genotypic and phenotypic changes in the *E. coli* long-term evolution experiment using metabolomics".

Robert S. Rosen **Scientific Reports**, October 2023. "An in vitro model of the macrophage-endothelial interface to characterize CAR T-cell induced cytokine storm".

Iva Salamon **Nature Communications**, September 2023. "Celf4 controls mRNA translation underlying synaptic development in the prenatal mammalian neocortex".

Courses for writing

Rutgers English Language Institute (RELI) - <https://reli.rutgers.edu/>

Supports multilingual English language learners including Intensive English program and Professional English workshops

Graduate Writing Program - <https://wp.rutgers.edu/gwp/gwp-home>

16:355:506 Writing for Publication

Focuses on overall organization of published work as well as writing and editing at the level appropriate for a journal submission in the student's graduate field.

16:355:508 Writing the Dissertation

Focuses on writing at the level appropriate for a dissertation in the student's respective field.

16:355:502 Graduate Writing Class

Focuses on writing for abstracts, reviews, conferences

16:355:610 Graduate Communication Studio

Focuses on oral communication



Writing Workshops and Ongoing Writing Accountability Groups

Past year

- Mastering the Art of Scholarly Publishing
- The Do's and Don'ts of Effective Figure Design
- Top Design Tips for Better Graphical Abstracts
- Manuscript Writing Workshop
- Top Tips for Better Posters
- Best Practices for Depicting Biological Pathways

Upcoming

- November 22 from 12-4pm Developing an Effective Writing Process in Science

Mondays from 2:30-4:30pm in Center for Advanced Biotechnology and Medicine (CABM), 679 Hoes Lane West, Room 241, Busch Campus, Piscataway. [Here is the attendance sheet](#) if you want to add your name.

Wednesdays from 10am-12pm in Child Health Institute of New Jersey (CHI), 89 French St, Room 4278, New Brunswick Health Science Campus, New Brunswick. [Here is the attendance sheet](#) if you want to add your name.

Fridays from 4-6pm in Bartlett Hall, 84 Lipman Drive, Library Room, Cook Campus, New Brunswick. Sign up [here](#)

Communicating Science Course

<https://grad.rutgers.edu/academics/academic-enrichment-programs/communicating-science-course>

- Spring Semester on Wednesdays from 4-7pm
- Important to be able to speak about your research to different audiences
- Grant from Burroughs Wellcome Fund (Ponzio PI)
- Techniques from Alan Alda Center. Faculty from Mason Gross and Sciences
- 3 Minute Thesis (3MT)
- Capstone project with mentor in field of interest



Responsible Conduct of Research Courses

Ethical Scientific Conduct Course No. 16:115:556 and 15:115:558

<https://grad.rutgers.edu/academics/academic-enrichment-programs/responsible-conduct-research-training>

- These courses complies with NIH guidelines for RCR training.
- Two courses:
 - Initial training for those who have never had RCR previously: format is lecture by content expert for 30 min followed by small group case discussions for 30 min led by faculty. Weekly written assignments. Spring semester on Mondays from 4-5pm
 - Refresher training for those who have had RCR previously to be taken by 5th year PhD students. Four 2 hour sessions of case study discussion. Spring semester on Tuesdays in February from 3-5pm



Statistics Courses for Rigor and Reproducibility Training

<https://grad.rutgers.edu/academics/academic-enrichment-programs/rigor-reproducibility-training>

"Statistics in Biomedical Science" CTSC 5103S. SGS Course number 16:115:557
(index#: 22748) Fall and Spring

"Interdisciplinary Biostatistics" 16:125:578 Spring

"Deeper Data Analysis for Neuroscience and Psychology 16:830:533:01 Spring every
other year



Academic Support Services

<https://learningcenters.rutgers.edu/student-services/graduate-students>

- Academic coaching
- Study practices
- Time management
- Test taking strategies
- Goal setting

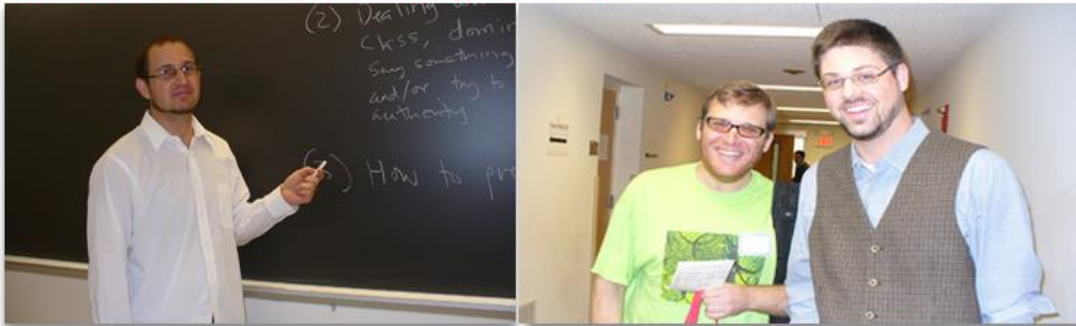


Teaching and Leadership Training



<https://grad.rutgers.edu/professional-development/teaching-skills/ta-project>

Rutgers Academy for the Scholarship of Teaching and Learning



<https://grad.rutgers.edu/professional-development/rutgers-academy-scholarship-teaching-and-learning>



PreDoctoral Leadership
Development Academy

<https://ol.rutgers.edu/programs/plda/>

Mentoring Skills: Effective Mentoring of Undergraduates Microbadge



Effective Mentoring of Undergrads

This active learning workshop for PhD students, Postdoctoral Fellows and Faculty will use techniques and **case study discussions in breakout sessions** to teach tools and skills to better mentor undergraduate students in a research setting. Attendees will also reflect upon approaches they would use to mentor trainees and employees when they are running a lab or research group in the future. An opportunity to earn a **Microbadge in Mentoring Undergrads** is available for those who wish to follow up with additional activities.



Wednesday, May 1, 2024
12-2pm



Registration link

https://rutgers.ca1.qualtrics.com/jfe/form/SV_Ouk9EgFqsXEhEFM

Zoom link

<https://rutgers.zoom.us/my/alderja> Passcode: Janet

Topics and interactive case studies led by Drs. Janet Alder, Evelyn Erenrich, Xenia Morin and Benton Purnell from the National Research Mentoring Network (NRMN) and Entering Mentoring:

- Managing student projects
- Contract for undergrads
- Aligning expectations
- Dealing with anxiety
- Cultural sensitivity
- Assessing understanding
- Promoting motivation





Mentoring opportunities in the larger community

STEM GRADS GIVING BACK *Upward Bound Math-Science*

Rutgers graduate students - you can be the person who inspires a high school student to pursue college and the study of science!

SGS is partnering with Rutgers Upward Bound Math-Science a pre-college program designed to assist and motivate first generation and low-income students to successfully graduate from high school, prepare for college admission, and complete their baccalaureate degree in STEM.



Financial Planning Workshops



Financial Planning Workshop for Grad Students and Postdocs

This free workshop will be presented by the Financial Planning Association of New Jersey to educate graduate students and Postdocs on **cash flow management, debt, student loan paydown and building a safety net**. We know that living on a grad student and postdoc income can be challenging and many of you also have families to support. The skills you gain in this workshop will help you navigate your financial situation.

Thursday Feb 29, 2024
4:00 – 5:30 pm

Register at this site:

https://rutgers.ca1.qualtrics.com/jfe/form/SV_3fKbCabEjfbn3Lg

Zoom Information:

<https://rutgers.zoom.us/my/alderja> Passcode: Janet
Phone only dial +1 646 558 8656 Meeting ID: 419 868 7830



For more information contact janet.alder@rutgers.edu



Tips for new graduate students. Ask current grad students for advice on these topics:

- ❖ Can defer undergraduate loans but need to complete paperwork
- ❖ Complete I-9 and W-4 forms
- ❖ Set up direct deposit
- ❖ Taxes are not taken out of “fellow” stipend checks and may need to pay estimated quarterly tax
- ❖ International students need to set up Social Security Number

Aaron Shatkin Award

Awarded to 3 or 4 graduate students annually for distinguished research work and academic excellence over the applicant's tenure at Rutgers University

2023 Winners

Andrew Boreland

Cell and Developmental Biology
From the lab of Dr. Zhiping Pang

Chelsea Cary

Toxicology
From the lab of Dr. Phoebe Stapleton

Courtney McDermott

Neuroscience
From the lab of Dr. Manny DiCicco-Bloom

Mikayla Volgewede

Neuroscience
From the lab of Dr. Huaye Zhang





Graduation Awards

2024 Winner from Biomedical/Biochemical Programs

Outstanding Doctoral Student Award

Danielle Kozlosky, Toxicology





RUTGERS UNIVERSITY
School of Graduate Studies

Your career



Rutgers - iJOBS

NIH Broadening Experiences in Scientific Training (**BEST**) Awards
\$2 million for 5 years to create infrastructure (2014-2019)

Rutgers U

Boston U

UC Davis

UC Irvine

UC San Francisco

U Chicago

U Colorado Denver

Cornell

U Mass Worcester

Michigan State

New York U

U North Carolina

U Rochester

Vanderbilt

Virginia Polytech

Wayne State

Emory/Georgia Tech



iJOBS Participation

RUTGERS

Rutgers Graduate Students

- SGS (New Brunswick/Piscataway/Newark)
- GSN (Newark)
- GSC (Camden)

Rutgers Postdocs

- RWJMS
- NJMS
- SAS New Brunswick
- SoE
- SoP
- SEBS
- SAS Newark
- SAS Camden

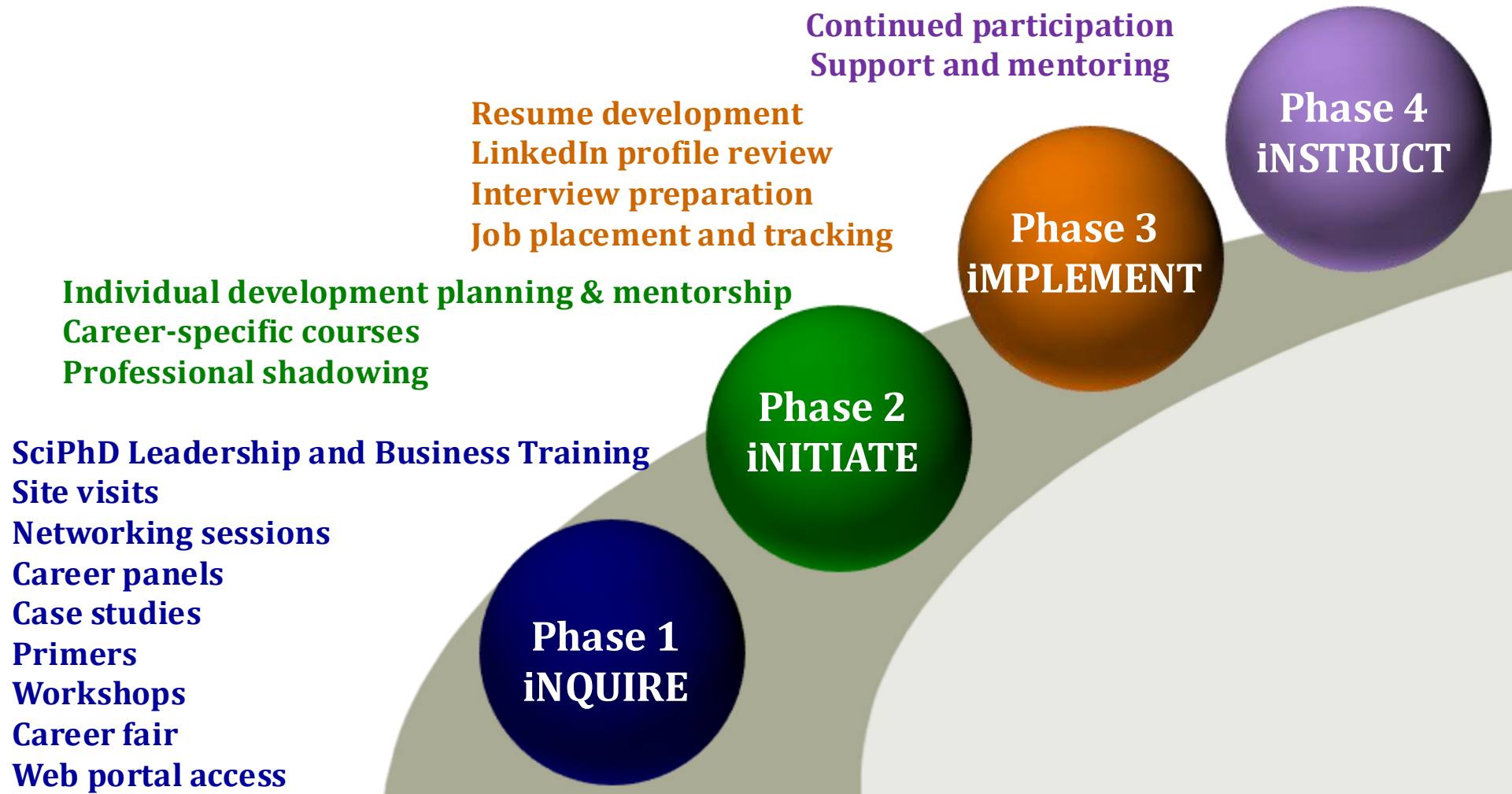


Representative Career Panels

- Faculty position at R1 institution
- Faculty position at Primarily Undergraduate Institution
- Bench research in Pharma and Biotech
- Medical Devices
- Postdocs in Industry
- Contract Research Organizations
- NIH
- FDA
- Computational Biology
- Data Science
- Consulting
- Science and Health Policy
- Patent Law
- Tech Transfer and Business Development
- Clinical Research
- Regulatory Affairs
- Scientific Writing and Medical Communications
- Food and Fragrance Industry
- Journalism
- Teaching Education Outreach
- Entrepreneur
- Plant and Agriculture Industry
- Non-faculty Jobs in Academia
- Tech and Sales Support



iJOBS Phased Programming



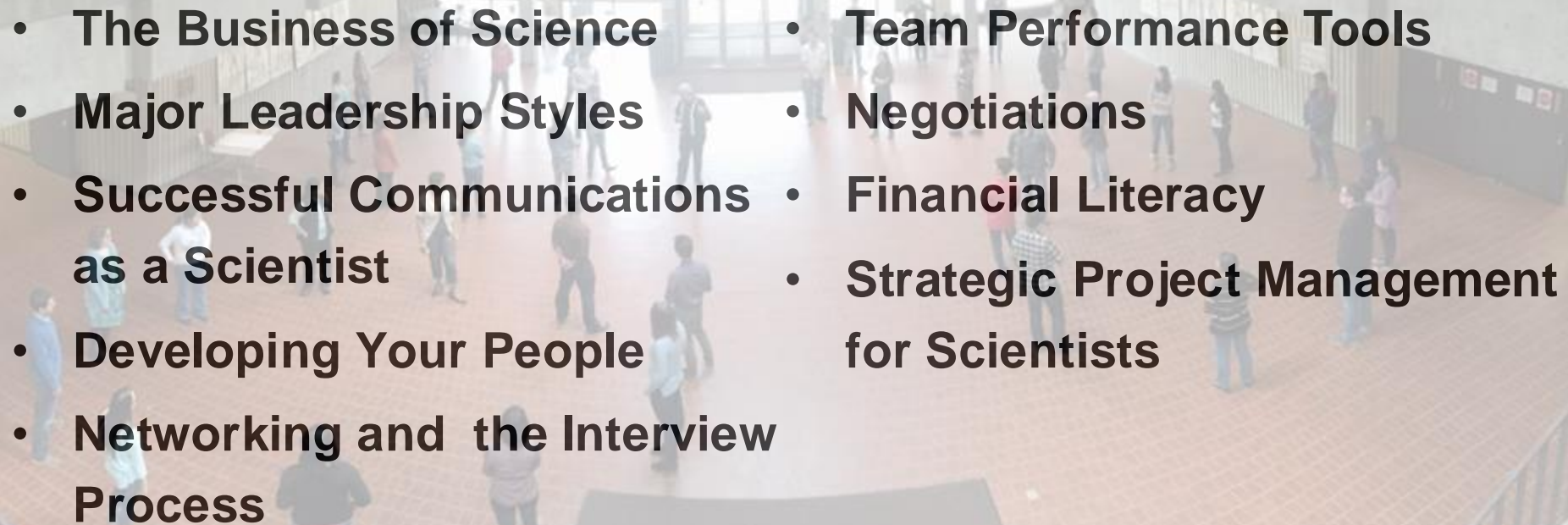


**Phase 1
iNQUIRE**

SciPhD: Leadership and Business Skills for Scientists

Provided by Human Workflows, LLC

Every early January – 2.5 days

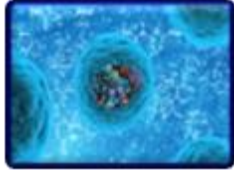
- 
- **The Business of Science**
 - **Major Leadership Styles**
 - **Successful Communications as a Scientist**
 - **Developing Your People**
 - **Networking and the Interview Process**
 - **Team Performance Tools**
 - **Negotiations**
 - **Financial Literacy**
 - **Strategic Project Management for Scientists**

Representative Site Visits

- Admera Health
- Genmab
- Amgen
- WuXi Biologics
- Pfizer
- Becton Dickinson
- Siemens Healthineers
- Stryker (3)
- IPG Health (3)
- Genewiz (4)
- Merck (6)
- Wiley Publishing (2)
- Bristol-Myers Squibb (9)
- Novartis (4)
- GlaxoSmithKline (3)
- Regeneron (4)
- Eli Lilly (3)
- Celgene (2)
- Janssen (3)
- Commercial Center for Innv Tech (2)
- Inst for Life Sci Entrepreneurship (2)
- Enterprise Development Center
- Sanofi Aventis
- Covance
- Kashiv
- Hovione
- NJ Dept. of Health (3)
- Ferring Pharmaceutical
- Colgate-Palmolive (2)
- Envigo
- Ethicon
- J&J Consumer
- Bayer (2)
- PTC Therapeutics
- Nanion Technologies



Representative Job Simulations



- Health Economics and Outcomes Research – analyze a drug
- Technology Transfer – how to commercialize an invention
- Equity Research – decide if you should invest



- Project management – determine timeline and deliverables
- Entrepreneur – what is involved in starting a biotech
- Science Policy – write a policy memo



- Business Development – decide whether to acquire a new company
- Pharma R&D - design preclinical trial to optimize clinical success
- Publishing – decide whether to accept a manuscript



- Pharma Market Research Analysis – report on whether drug is worth pursuing
- Medical Affairs –Medical Informaticist vs MSL role play
- Consulting – recommend approach to launch new clinical trial

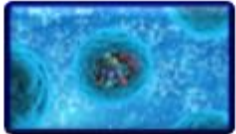


- Regulatory Writing – prepare an Investigative Brochure
- Medical Communications – create slide deck for physician
- Patent Law – rewrite patent to demonstrate originality
- Mergers and Acquisitions – decide how much to bid on a new company

Representative Workshops



- Navigating Career Transitions
- Primer in Drug Discovery through Pre-Clinical Development



- Agile Project Management and Microsoft Project



- Python and Genomics Data Analysis by Data Carpentry



- Self assessments (Clifton Strengths)



- Targeted Resumes
- Value Proposition and LinkedIn Profiles
- Finding and applying for an internship



- Emotional Intelligence and influencing others
- Job search using staffing agencies



Phase 2
iNITIATE



Drug Development from
Concept to Market

Career Track Example Skill Classes

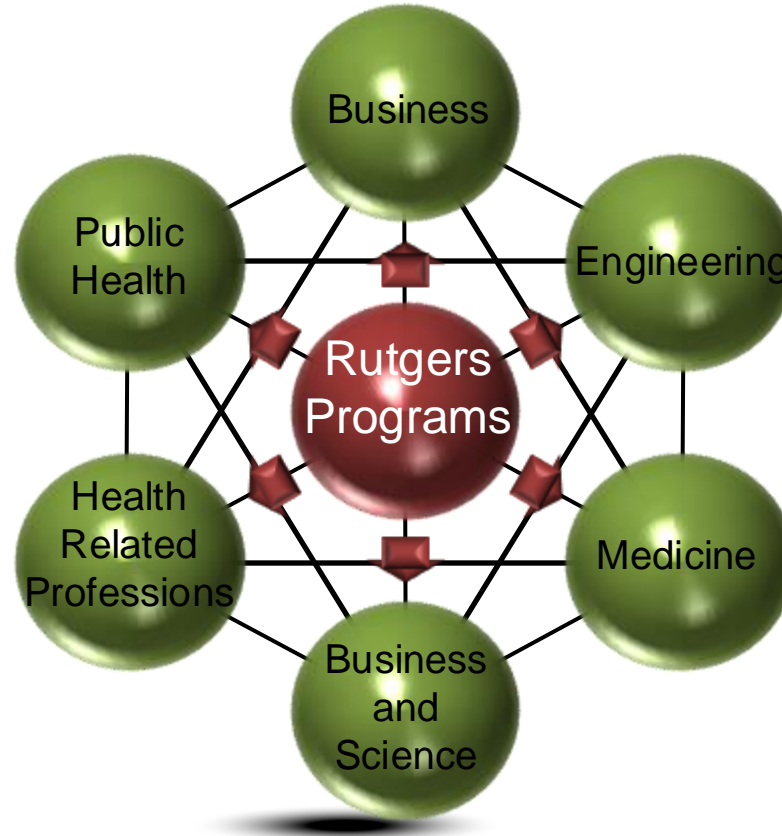
Perspectives in
Translational
Pharmacology

Principles of
Communication and
Leadership

One 40-Hour Class

Clinical Trials Overview:
Methods and Practices

Principles of Finance and
Accounting



Fundamentals of
Regulatory Affairs

Clinical Research
Informatics

Project Management

Pharma Product
Management

Clinical Trials Overview:
Methods and Practices

Organizational Behavior

Fundamentals of
Regulatory Affairs

Innovation and
Entrepreneurship

Professional Shadowing and Mentoring



- Each trainee is matched to a professional for a shadowing opportunity relevant to their chosen track with industrial, institutional or governmental partners. 72 hours over a whole semester.
- Each trainee is assigned a professional mentor and uses the Individual Development Plan (IDP) as a framework for growth.



Communication Platforms

Email listserve: 1500 members



Trainee run blog:
grad.rutgers.edu/ijobs/blog



Website: ijobs.rutgers.edu

iJOBS Past Events with Recordings

Event Title	Date	Time
iJOBS Career Panel: Academic Jobs at Large Research and Small Undergrad	August 2, 2021	1:00 - 2:30 pm
iJOBS Workshop: J&J Practice Virtual Interview Session	July 28, 2021	9:30 - 11:00 am
iJOBS Workshop: Exploring Scientific Communications Careers	July 26, 2021	3:00 - 5:00 pm

iJOBS Program Registration

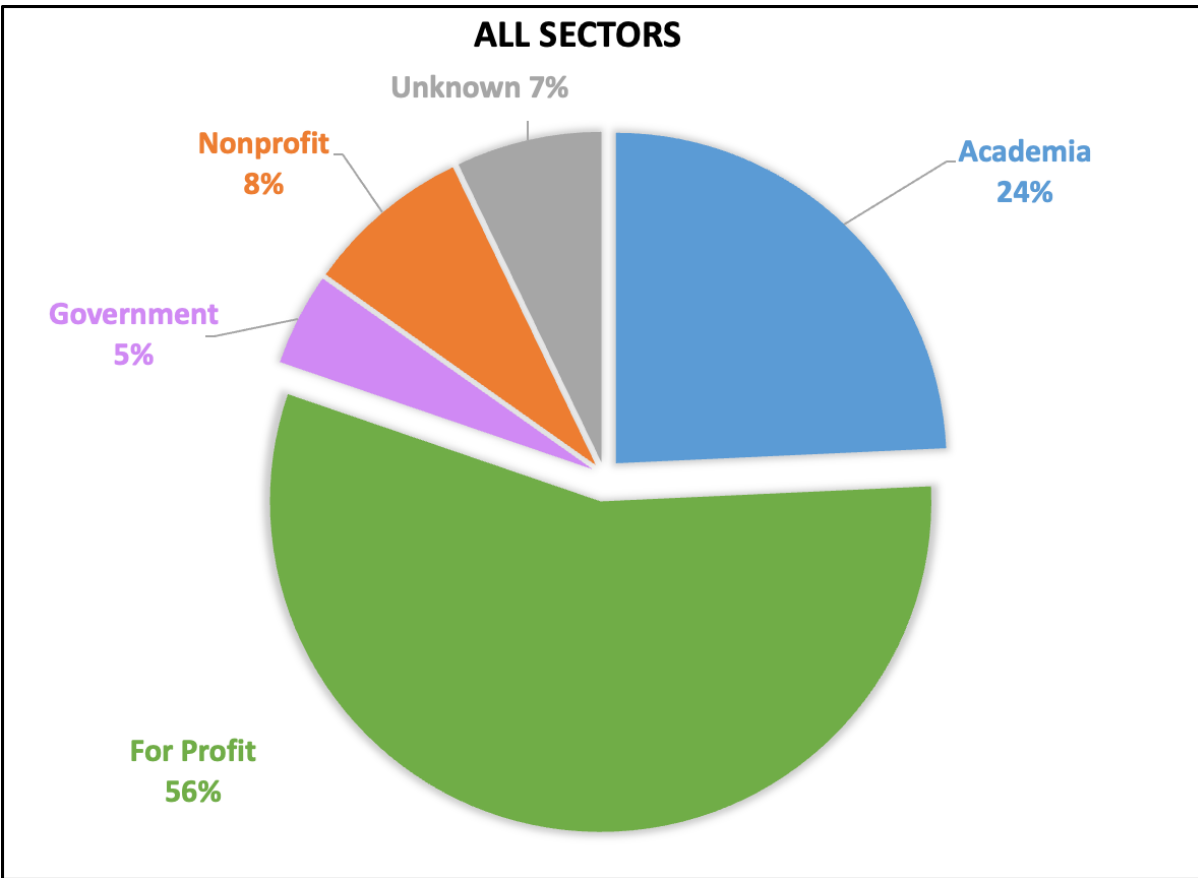
Phase 1

- iJOBS programming open to all pre and post-doctorates as well as recent alumni.
- Some events have limited capacity but put your name on the wait list

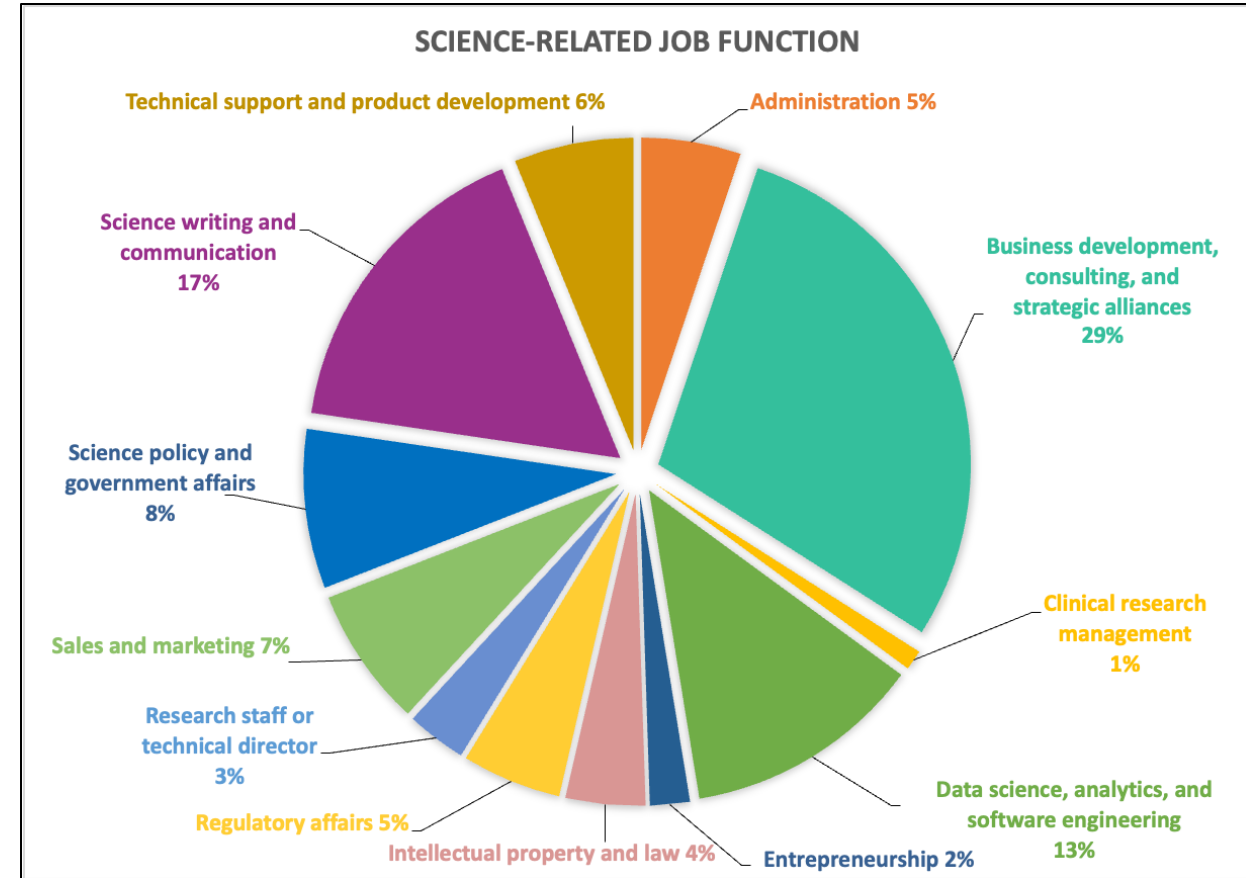
Phase 2

- Graduate students should have completed propositional qualifying exam. Postdocs are eligible at any time.
- Trainee application approval based upon Phase 1 participation (12 hours), letter of intent, letter of recommendation. PI approval for participation is required with application.
- Applications open every April and program starts in September for 1 year

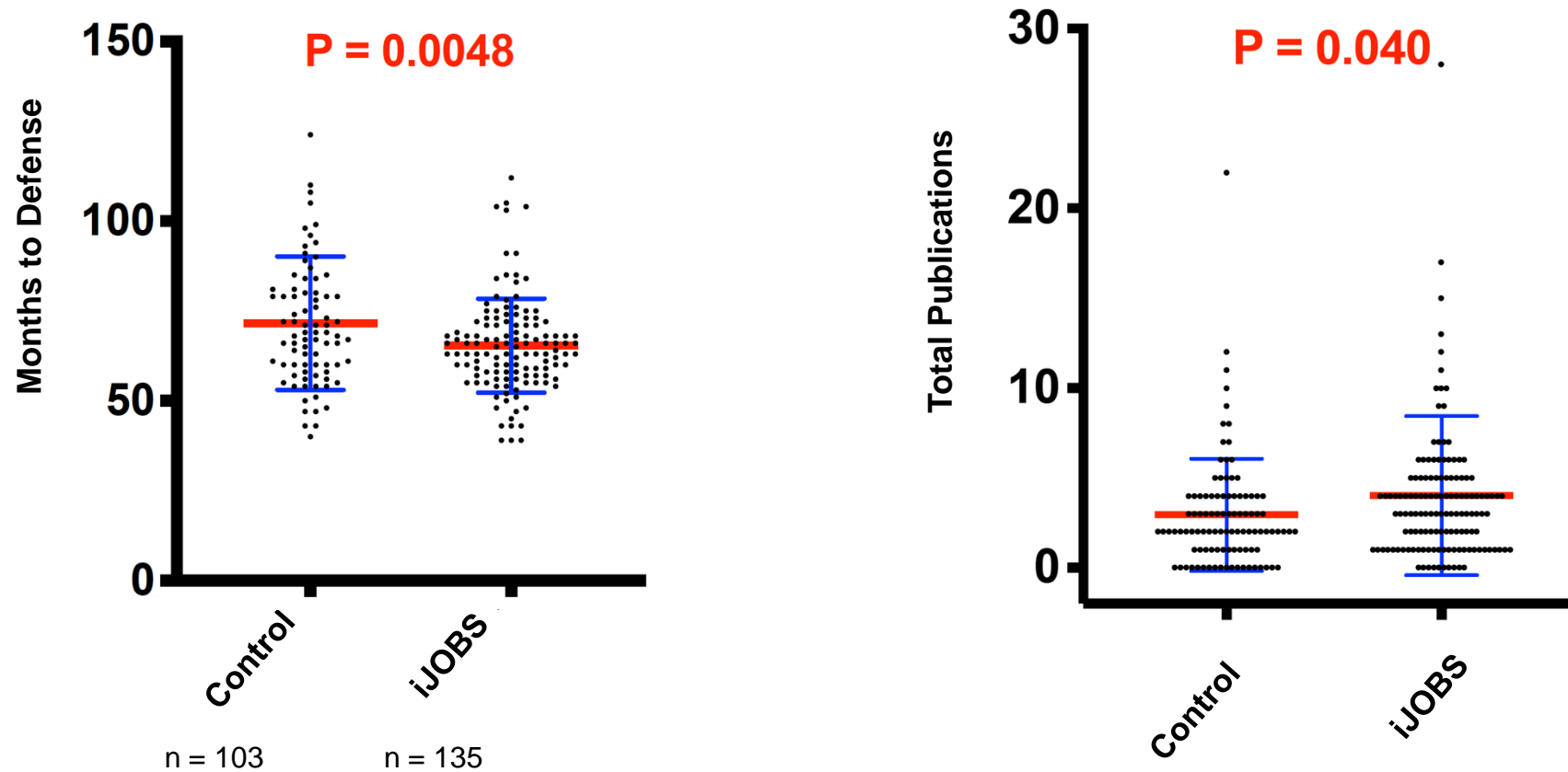
First Position of SciPhD Participants (n = 310)



First For-Profit Non-Research Positions (n = 310)



iJOBS Participants Have Decreased Time to Defense and Increased Total Publications



Measuring Effects of Trainee Professional Development on Research Productivity:
A Cross-institutional Meta-analysis, Brandt et al., PLOS Biology, 2021



RUTGERS UNIVERSITY
School of Graduate Studies

Non-Academic Resources

Join our groups and also email us your news to post!



<https://calendar.google.com/calendar/u/0?cid=Z3Nic3Bpc2NAZ21haWwuY29t>

- Seminars
- Career development events
- Thesis defenses
- Workshops
- **Can link to your calendar**



<https://www.linkedin.com/groups/3679494/>

- LinkedIn has **alumni contacts** – important for career development



Have Fun!



Rutgers is less than an hour to NYC and Philadelphia by train



New Brunswick



Princeton



Newark



Delaware and Raritan Canal



Jersey Shore



Poconos Mountains



Reach Out if You Need Help – Rutgers CAPS and "Let's Talk"

Counseling and Psychiatric Services (CAPS) <http://health.rutgers.edu/medical-counseling-services/counseling/>
Monday-Friday 9am-4pm: 848-932-7884^[SEP] Evenings and weekends: 1-855-654-6735

"Let's Talk" drop in hours - Walk-ins welcome but you can make an appointment by calling 848-932-7884, option 2 and leave your name, RUID and phone number

• ***Thursdays 10 am – 12 pm with Dana Simons, Busch Campus or Zoom***

Location: In-person in CABM Room 240 at 679 Hoes Lane West, Piscataway, OR via Zoom.

<https://rutgers.zoom.us/j/99204936276?pwd=ra7be7mH7i4xVU8pi3jEA0wn90b9QW.1#success>

• ***Mondays 2 pm – 4 pm, Thursdays 2pm - 4pm and Fridays 11am-Noon with Shan Reeves***

Mondays 2 PM - 4 PM at 5 Seminary Pl (Honors College), Room E125, Thursdays 2 PM to 4 PM at Chemistry and Chemical Biology Building, 123 Bevier Road, Room 2105 and Fridays 11AM - 12PM at 15 Seminary Place, Academic Building West, Room 5050.



Other resources

-The Trevor Project (crisis hotline for LGBTQ Youth): 866-488-7386

-Crisis Text Line (CTL): Text KNIGHTS to 741741 & include "STEVE" for People of Color on any smart phone (available 24/7)

-Acute Psychiatric Services (APS: available 24/7) Dial 1-855-515-5700. If you are out of the New Brunswick/Piscataway area, call 911

-NJ Hopeline, 24 hour crisis phone line: 855-654-6735 (Available within NJ 365/24/7)

-RUPD: 848-932-7211

-National Suicide Prevention Lifeline: 1-800-273-TALK (8255)

Uwill Mental Health Support Now

Free immediate access to teletherapy through an easy-to-use online platform

1. Choose a therapist based on your preferences, including issue, gender, language, and ethnicity.
2. Select a time that fits your schedule with day, night, and weekend availability.
3. Access is quick and easy. [Register and book](#) your first session using your Rutgers email.
4. Uwill is **Private. Secure. Confidential.**



Virtual Workshops for Biomedical Graduate Students by Dana Simons and CAPS

ALL BY ZOOM

Managing Imposter Syndrome and Cultivating Self-Compassion

Monday, September 16th, 4:00pm-5:00pm

Emotion Regulation, Stress Management, and Cultivating Resilience

Wednesday, October 9th, 1:00pm-2:00pm

Time Management and Life Balance Workshop

Tuesday, November 5th, 12:30pm-1:30pm

Working through Anger, Resentment, and Conflict

Wednesday, November 20th, 12:30pm-1:30pm

Mindfulness Meditation Workshop

Monday, December 9th, 4:00pm-5:00pm



Mental Health

Rutgers Food Pantry

<https://ruoffcampus.rutgers.edu/food-pantry>

•Who Qualifies

- Any student at Rutgers University. You just need a Rutgers ID card and create an account on PantrySoft before you go.

•Hours of Operation/Locations 126 College Ave, New Brunswick 84

- Monday: Closed
- Tuesday: 12 p.m. – 4 p.m.
- Wednesday: 12 p.m. – 4 p.m.
- Thursday: 12 p.m. – 4 p.m.
- Friday: 12 p.m. – 4 p.m.



Mobile Food Pantry on Busch, Livingston & Douglass Wednesdays 1 pm -4:15 pm

**If these hours do not work with your schedule, please contact us – we will make arrangements with you that suit your needs. Please contact Off-Campus Living and Community Partnerships at

basicneeds@echo.rutgers.edu

DO SOMETHING TO HELP website for concerns about mental health, discrimination and harassment Issues
<http://health.rutgers.edu/do-something-to-help/>

Do Something To Help – Share A Concern!

If this is an emergency, call **9-1-1** immediately! From a University phone, obtain an outside line and dial **9-1-1**.

Rutgers is a community that cares. We DO SOMETHING when we are concerned about one of our community members. When you click on one of the areas below you will find a form or additional contact information where you can share your concern.

- [Click here to share a concern regarding any of the following:](#)

1. A student who may be using dangerous **drugs (heroin, prescription drugs)**
2. A student representing a **threat to themselves or others**
3. A student's **emotional state and well-being**
4. **Disruptive or aggressive behaviors** in a classroom or on campus

- [Click here to share a concern regarding a bias incident](#)
- [Click HERE to share a concern regarding **SEXUAL ASSAULT, DATING VIOLENCE, STALKING OR SEXUAL HARASSMENT**](#)
- [Click here to share a concern regarding a violation of the Code of Student Conduct](#)



RU HERE Attendance Confirmation

RUTGERS

Welcome Kelley Sokolowski

ACTION REQUIRED

You are required to take action on the following item(s) before you can proceed to any services that require your Rutgers credentials

RU HERE: COURSE ATTENDANCE

You are registered for the Spring 2021 semester. Please confirm your enrollment below

I confirm my attendance for the Spring 2021 semester.

I will be physically residing for the upcoming term at the following address:

Street:

City: State: Zip:

The type of address provided above is: On-campus (Residence Hall)

**** Please note, this will NOT be used to update your permanent address, which is the address used for all official university correspondence. To make changes to that address and to your Emergency Contact information, follow the links in the confirmation email.**

I will not attend the Spring 2021 semester and understand that I must complete the formal withdrawal process.



We Are Here for You

Janet Alder: janet.alder@rutgers.edu



Graduate Student Organizations

- Molecular Biosciences GSO (MBGSO)
- Rutgers Association of Toxicology Students (RATS)
- NeuroConnections
- Biomedical Engineering Student Society (BESS)
- Chemistry and Chemical Biology (CCB)
- Nutritional Sciences GSO
- Endocrinology and Animal Biosciences GSO
- Microbial Biology (ASM)
- NJ Seeding Labs
- Society for Advancing Chicanos/Hispanics and Native Americans in Science (SACNAS)
- Council of Black Graduates (CBG)
- iJOBS blog
- Rutgers GSA – events for everyone
- Affinity Groups (Bisexual students, BIPOC LTBTQIA2S+ students, Chinese students, International students, African students, Neurodivergent students. Parent and Parenting students)



Ice Breaker

Share your name, program, degree (MS or PhD), where you grew up, where you went to college and one Fun Fact about yourself. This is something that you think is a little unique about yourself.

Once everyone has gone, then go around and share something that you think you might have in common with at least 2 other people in your group.

I will go first...

