

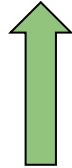
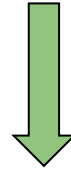
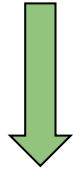
My career path – Caroline Pantazis

<https://www.linkedin.com/in/caroline-p-89b45055/>

2019
Completed
PhD

2020-2022
Scientific
Project
Manager

2022-present
Lead Scientific
Project
Manager



2019-2020
Postdoc



My current role

Research Programs

All Research Programs

AutoTAC (Tau Protein
Aggregates)

Brain Atlas

iDA Project

iPSC Neurodegenerative
Disease Initiative

Long-read Sequencing

Molecular Pathology Unit

RNA Transport and
Translation Unit

TDP-43

Propose a CARD

Research Challenge

All Research Programs

CARD is a uniquely collaborative center. We focus on projects with the potential to produce valuable [data, resources, and tools](#) for others working on Alzheimer's and related dementias (AD/ADRD). All of our projects connect and complement one another, and benefit from the diverse skills and expertise of our [expert groups](#).

Research at CARD



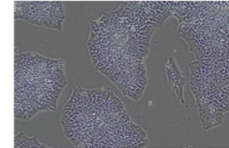
[AutoTAC \(Tau Protein Aggregates\)](#)

We aim to de-risk therapeutic strategies for AD/



[Brain Atlas](#)

We're working to reveal differences between healthy and AD/ADRD brains at the cellular level.



[iPSCs to Study Diversity in AD/ADRD \(iDA Project\)](#)

A new database of

Supervise a team of project managers and biologists to track and manage cross functional scientific teams to carry out research projects in Alzheimer's disease and related dementias research, according to the National Plan to Address Alzheimer's Disease

Some suggestions

Consider contractor mechanism as an entry into federal service

Apply to a lot of jobs, even those that only seem a bit interesting to you.

Emphasize “soft skills” from your PhD/postdoc-organizing, leading teams, communicating

Be willing to take on and learn new things (within reason)

iJOBS Career Panel

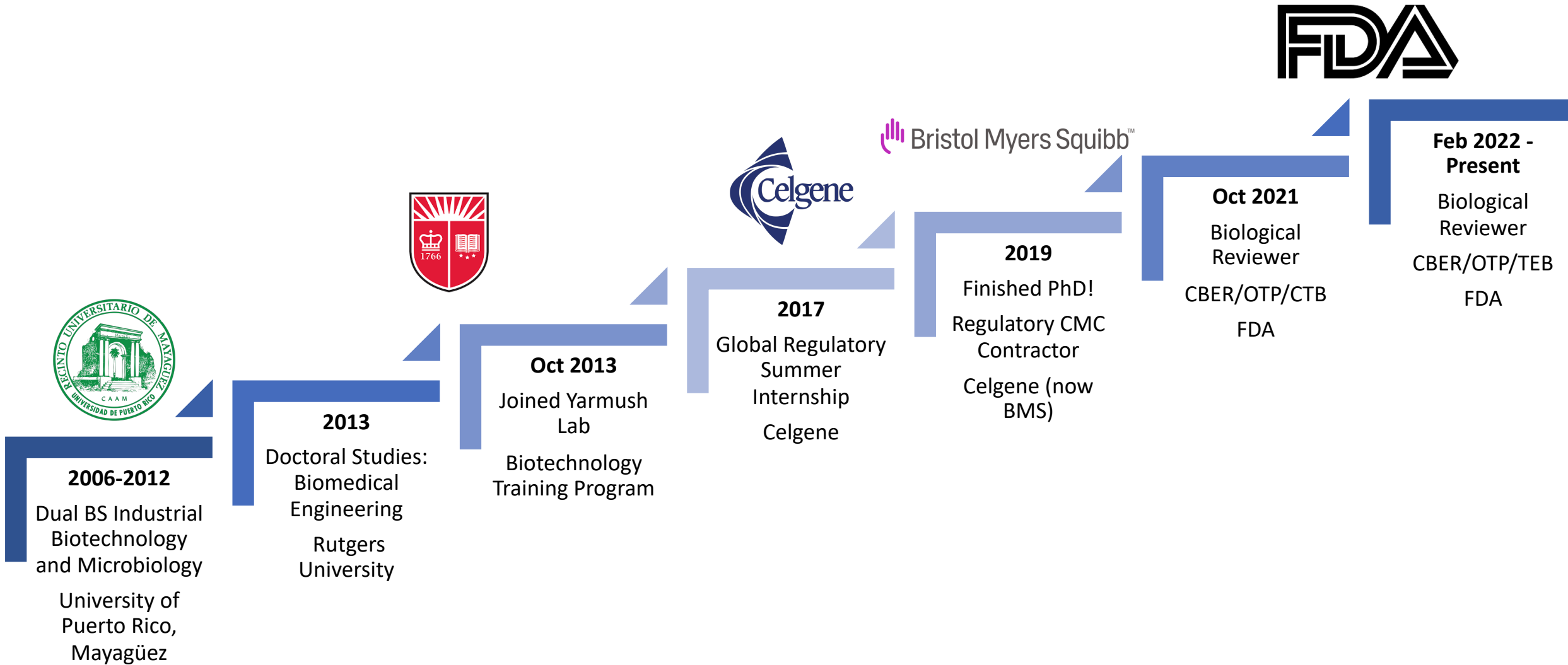
Ileana Marrero – Berrios

FDA Biological Reviewer

09/24/2024

Ileana.Marrero-Berrios@fda.hhs.gov

Career Path



Current Role: Biological Reviewer

- Chemical, Manufacturing, and Controls Reviewer at the Tissue Engineering Branch (TEB), OTP/CBER/FDA
 - Review cell and tissue engineered products (TEPs) Quality/Manufacturing information from clinical trial applications and marketing applications (licensure)
 - Review Cell/TEP-based devices and manufacturing equipment
 - Develop guidance/policy for TEPs
 - Review Focus on:
 - Materials/reagents
 - Starting material origin
 - Manufacturing process
 - Quality control (process controls, quality attribute testing, adventitious agent testing, biocompatibility, facility controls, etc.)

Advice: What can you do?

- **You do not need previous regulatory experience to become a reviewer!**
- Network – talk to individuals in the profession (you are here!)
- Join a professional society (e.g., RAPS)
- Look for internship opportunities
- Attend regulatory-focused courses
- Apply!
 - Full-time reviewer
 - Staff Fellow
 - Regulatory Reviewer
 - Regulatory Researcher/Reviewer

[Jobs and Training at FDA | FDA](#)

[USAJOBS - The Federal Government's official employment site](#)

Rasika Hudlikar

<https://www.linkedin.com/in/rasikahudlikar13/>

CAREER PATH

- **Ph.D.:** Advanced Centre for Treatment, Research and Education in Cancer (ACTREC) , Mumbai, India
- **Postdoctoral research:** Rutgers University, NJ, USA
- **Senior Postdoctoral Scientist:** NCI, NIH, Bethesda, MD, USA.
- **Research Scientist:** Walter Reed Army Institute of Research, MD, USA



Current role : Research Scientist, WRAIR, USA

- Assists in designing, developing, executing, and implementing scientific research
- Collecting and handling the clinical trial samples from the HIV vaccine clinical trials
- Managing collaborations, proposal budgets, purchasing.
- Assist with the preparation of data for presentations at scientific meetings and for publication in journals.
- Training postdoctoral fellows, research assistants for their projects.



Advise for the transition



Research



Informational
interviews



Network

Start applying
Be patient
Stay positive

Miriam Schachter

Research Scientist 1/Program Manager, Newborn Screening Laboratory

NJ Department of Health

Miriam.Schachter@doh.nj.gov

Career Path

- PhD in Biomedical Sciences from the Icahn School of Medicine at Mount Sinai
- Brief post doc in thesis lab while trying to figure out next steps
- Post doc in the NJ Newborn Screening Laboratory (APHL Fellowship)
- Entry level Research Scientist position in Virology and then NBS (3 years total)
- Research Scientist 1/Program Manager, Newborn Screening Laboratory

Current Role – Program Manager, NBS

- **Oversee all laboratory operations for the NBS Lab**
 - Hiring and staffing and staff logistics (total of 38 staff)
 - Purchasing and budgets
 - New assay development and validation
 - LIMS
 - Outreach
 - Day to day operations of specimen receiving, data entry, and testing (staff split into 5 testing units and 4 support units)
 - Results reporting
 - Legal

Advice

- Be open minded
- Learn about other ways to apply the lab skills you have learned
- Network and be open – you never know who will set you up with your first job
- Public health and clinical labs exist and need experienced scientists

DR. NIRMALA T. MYERS, PHD

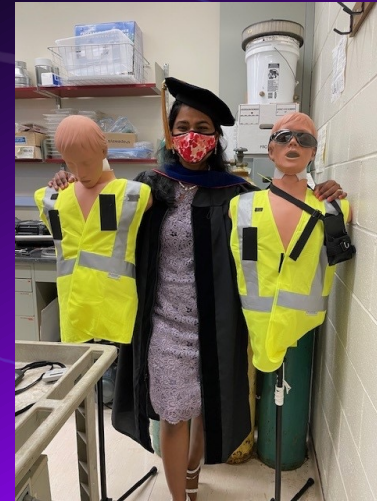
CENTERS FOR DISEASE CONTROL AND PREVENTION (CDC)
NATIONAL INSTITUTE OF OCCUPATIONAL SAFETY AND HEALTH
(NIOSH)

IJOBS PANEL 09/24/2024

EMAIL: NMYERS@CDC.GOV

CAREER PATH

- Bachelor of Technology – Biotechnology engineering, SRM University, Chennai, India – class of 2014
- Graduate School – Ph.D. in Exposure Science from Rutgers University – graduated in 2020
- Postdoctoral Fellowship – NIH funded at EOHSI, Rutgers University – completed in May 2022
- First job outside Academia – CDC NIOSH Morgantown – from June 2022



CURRENT ROLE

- Research Epidemiologist in CDC/NIOSH/RHD
 - 80% Epidemiology – Exposure Assessment and Hazard Surveillance
 - Acute inhalation injuries in all industry sectors
 - Acute injuries of women miners
 - Exposure surveillance of WTCHP participants
 - Exposure diagnosis codes in electronic health records
 - 20% Aerosol Sampling – Health Hazard Evaluation Program and Industrial Hygiene projects

CAREER ADVICE

- Begin your job search at least one year before your graduation or the end of your fellowship.
- Enhance online presence and do targeted networking
 - Contact by official email
- Consider applying for multiple opportunities simultaneously, even if you don't meet all the requirements.
 - Filter by location of interest, remote/hybrid positions, job descriptions